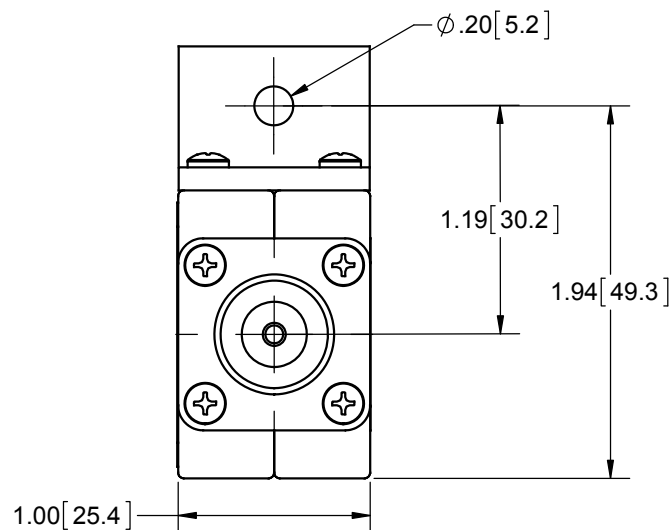
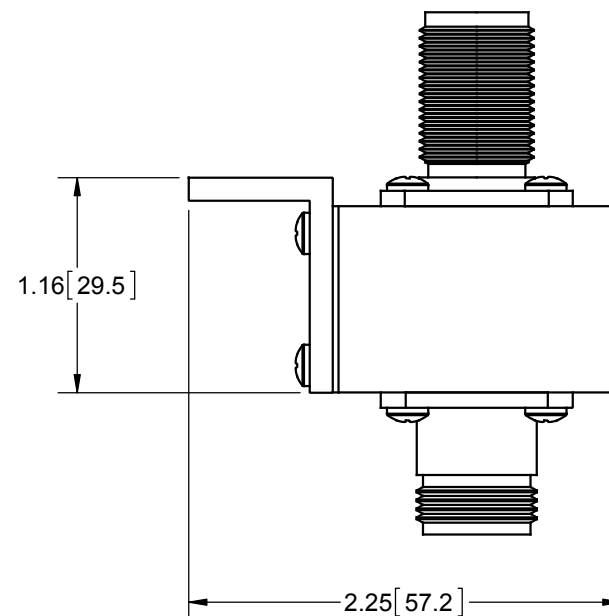
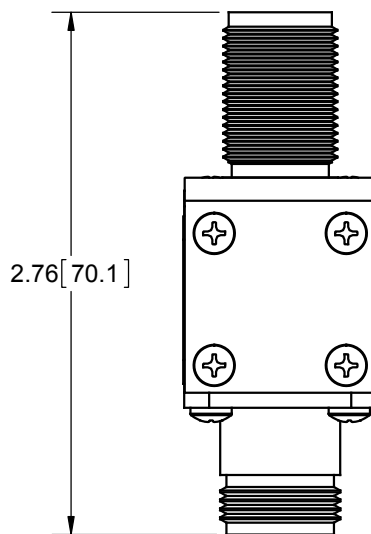
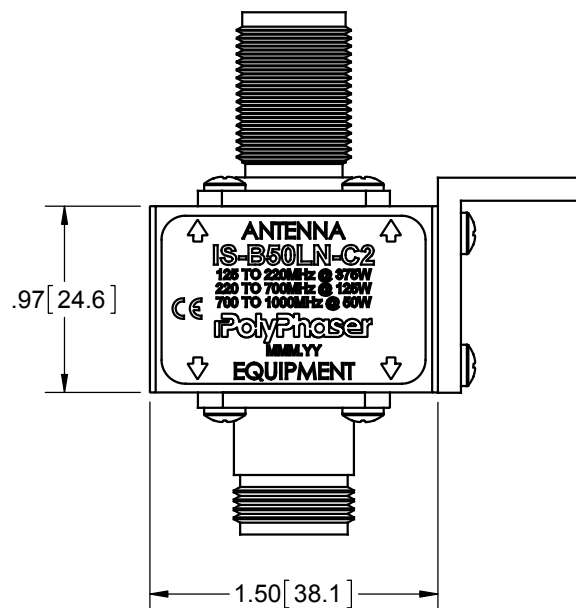


REVISIONS

REV.	DESCRIPTION	ECN	DATE	APPROVED
H	REFER TO ECN	11546	4/5/13	KCB



CUSTOMER APPROVAL: _____ DATE: _____

ALL DIMENSIONS SHOWN ARE FOR REFERENCE ONLY.

MAXIMUM CHARACTERISTICS

MAX SURGE:
50kA IEC 61000-4-5 8/20 μ s WAVEFORM
APPLICATION:
BULKHEAD MOUNT
FREQUENCY RANGE:
125MHz TO 1GHz
VSWR:
 $\leq 1.1:1$ OVER FREQUENCY RANGE
INSERTION LOSS:
 ≤ 0.1 dB OVER FREQUENCY RANGE
MAX POWER:
375W @ 125MHz DECREASING TO 50W @ 1GHz
TURN-ON:
600Vdc $\pm 20\%$
THROUGHPUT ENERGY:
 $\leq 220\mu$ J FOR 8/20 μ s WAVEFORM
OPERATING TEMPERATURE:
-55°C TO +50°C
STORAGE TEMPERATURE:
-55°C TO +85°C
RELATIVE HUMIDITY:
90% AT 40°C
VIBRATION:
1G AT 5Hz TO 100Hz
CE/RoHS COMPLIANT

UNLESS OTHERWISE SPECIFIED LEADING DIMENSIONS ARE INCHES DIMENSIONS IN [] ARE MILLIMETERS	DRAWN M. JOHNSON	DATE 7/11/94
TOLERANCES: FRACTIONS $\pm 1/32$.XX $\pm .03$ ANGLES $\pm 1^\circ$.XXX $\pm .010$	ENG APPD K. BARTEL	5/1/95
NOTICE: THE INFORMATION AND DESIGN IN THIS DOCUMENT IS THE PROPERTY OF POLYPHASER CORPORATION. ALL RIGHTS RESERVED.	PRODUCT MGR R. MATHEUS	5/1/95
THIRD-ANGLE PROJECTION	MARKETING APPD	
	PROJECT NO.	
	DOCUMENT NAME	IS-B50LN-C2-C

SIZE	CAGE	PROD CAT	PART NUMBER	REV
A	61114	RFP	IS-B50LN-C2	H

PolyPhaser

TITLE
CUSTOMER PRINT
IS-B50LN-C2
CUSTOMER SPECIFICATION

SHEET	1	OF	1
SCALE	1:1		