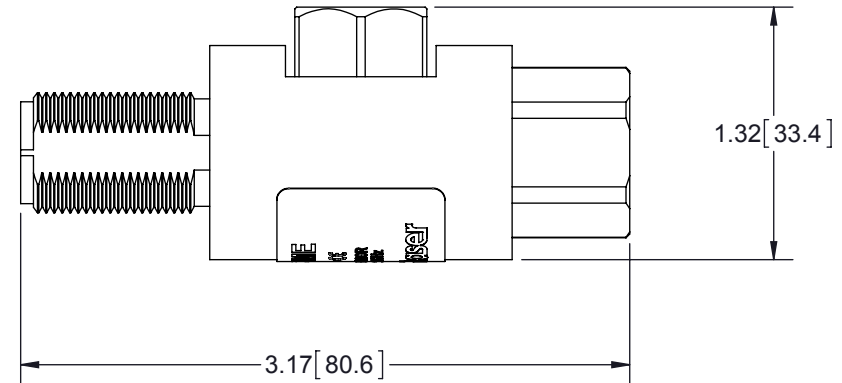
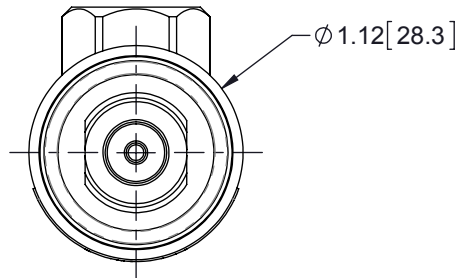


| REVISIONS |              |       |        |          |
|-----------|--------------|-------|--------|----------|
| REV.      | DESCRIPTION  | ECN   | DATE   | APPROVED |
| F         | REFER TO ECN | 11850 | 8/2/13 | MTH      |



#### MAXIMUM CHARACTERISTICS

APPLICATION:  
BULKHEAD MOUNT (SINGLE DOUBLE 'D') WEATHERPROOF

FREQUENCY RANGE:  
DC TO 2.4GHz

VSWR:  
≤1.28:1 OVER FREQUENCY RANGE

INSERTION LOSS:  
≤0.25dB OVER FREQUENCY RANGE

MAX POWER:  
50W @ 10MHz  
10W @ 2GHz

MAX SURGE:  
18kA IEC 61000-4-5, 8/20 S WAVEFORM

TURN-ON:  
±180Vdc±20%

DC:  
UP TO ±60Vdc 10A MAX

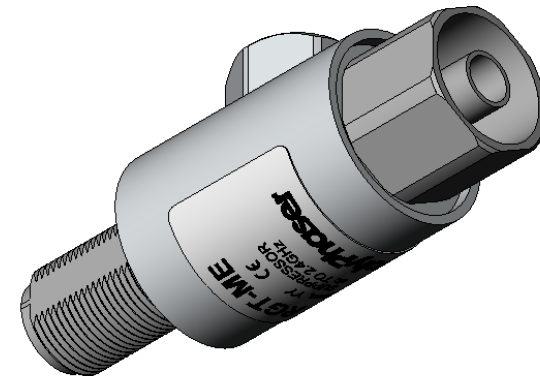
OPERATING TEMPERATURE:  
-40°C TO +85°C

STORAGE TEMPERATURE:  
-40°C TO +85°C

RELATIVE HUMIDITY:  
90% AT 40°C

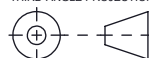

VIBRATION  
1G AT 5Hz TO 100Hz

ENVIRONMENTAL:  
MEETS BELLCORE #TA-NWT-000487  
PROCEDURE 4.11, WIND DRIVEN (120MPH)  
RAIN INTRUSION TEST.  
CE COMPLIANT



CUSTOMER APPROVAL: \_\_\_\_\_ DATE: \_\_\_\_\_

ALL DIMENSIONS SHOWN ARE FOR REFERENCE ONLY.

|  |                |               |        |                        |  |       |      |          |             |     |     |   |
|--|----------------|---------------|--------|------------------------|--|-------|------|----------|-------------|-----|-----|---|
| <div>UNLESS OTHERWISE SPECIFIED<br/>LEADING DIMENSIONS ARE INCHES<br/>DIMENSIONS IN [ ] ARE MILLIMETERS</div> <div>TOLERANCES:<br/>FRACTIONS=± 1/32 .XX=± .03<br/>ANGLES=± 1° .XXX=± .010</div> <div>NOTICE: THE INFORMATION AND DESIGN IN<br/>THIS DOCUMENT IS THE PROPERTY OF<br/>POLYPHASER CORPORATION. ALL RIGHTS<br/>RESERVED.</div> <div>THIRD-ANGLE PROJECTION</div> <div></div> | DRAWN          | JC            | DATE   | 6/29/99                | <div></div> |       |      | SHEET    |             | 1   | OF  | 1 |
|  | ENG APPD       | PS            | 7/7/99 |                        |  |       |      | SCALE    |             | 1:1 |     |   |
|  | PRODUCT MGR    | JJ            | 7/7/99 | TITLE                  | DC PASS dc-2.4GHz OP60Vdc<br>N FEM ANT, N MALE EQ  |       |      |          |             |     |     |   |
|  | MARKETING APPD | TF            | 7/7/99 | CUSTOMER SPECIFICATION |  |       |      |          |             |     |     |   |
|  | PROJECT NO.    | DOCUMENT NAME |        |                        |  | SIZE  | CAGE | PROD CAT | PART NUMBER |     | REV |   |
|  | RGT-ME-C       |               |        |                        | A  | 61114 | RFP  | RGT-ME   |             | F   |     |   |

THESE COMMODITIES, TECHNOLOGY OR SOFTWARE WERE EXPORTED FROM THE UNITED STATES IN ACCORDANCE WITH THE EXPORT ADMINISTRATION REGULATIONS. DIVERSION CONTRARY TO U.S. LAW PROHIBITED.