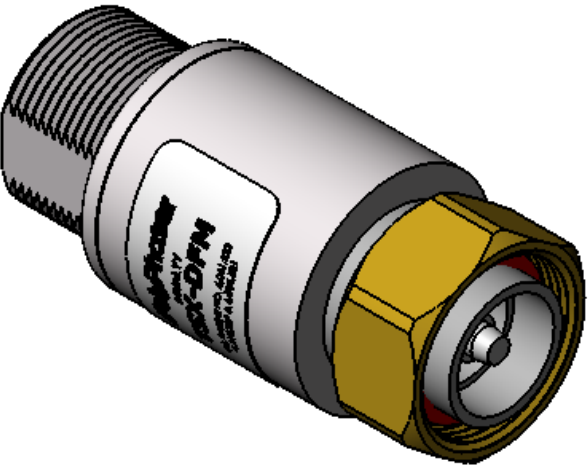
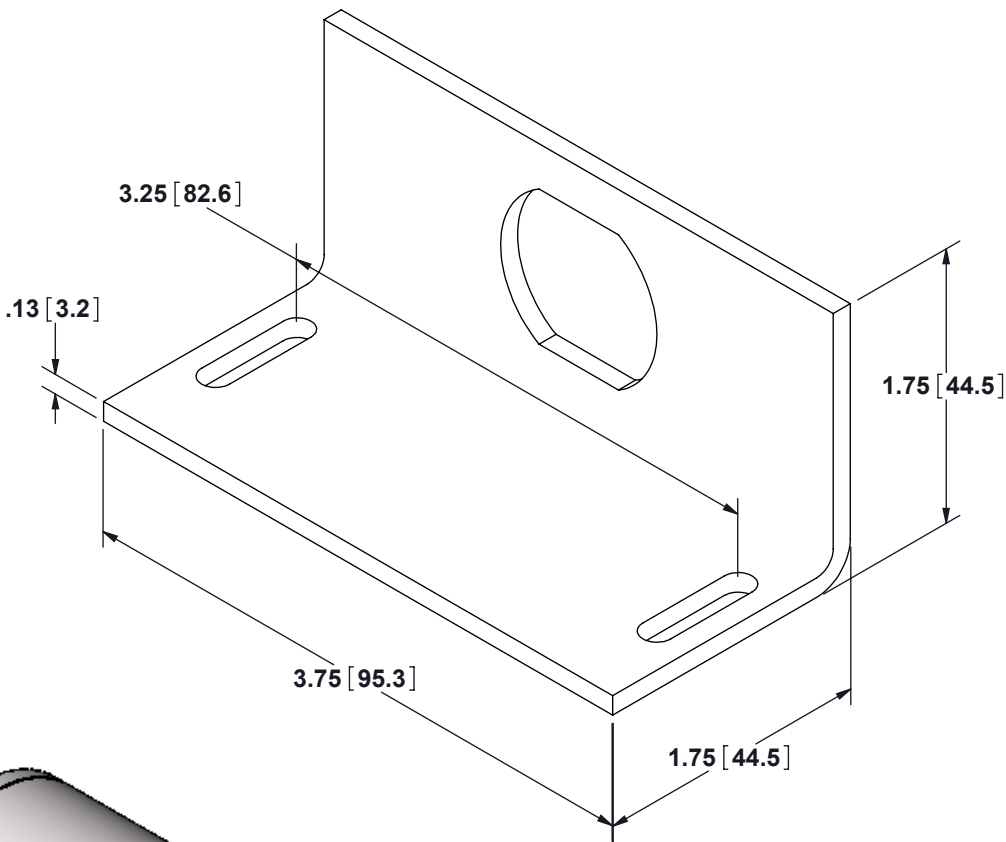
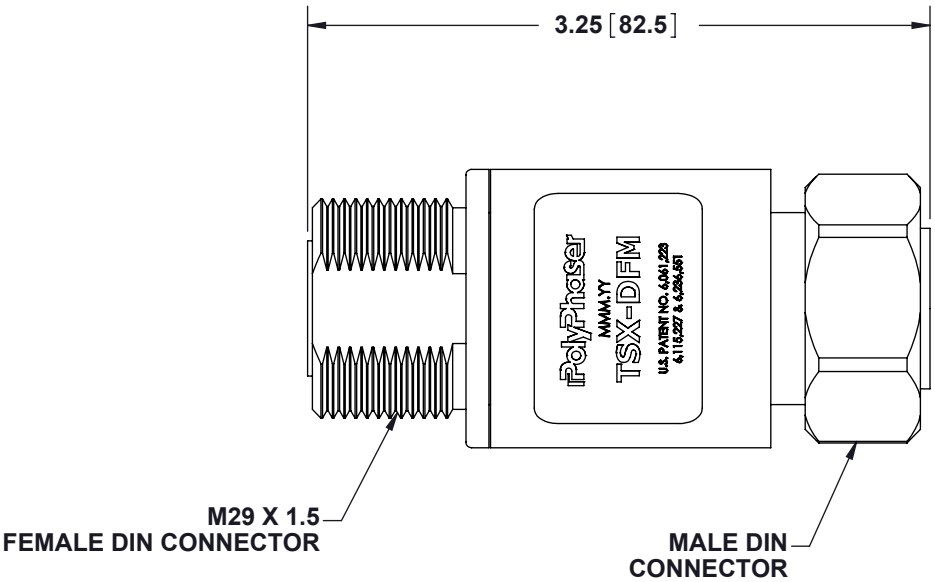
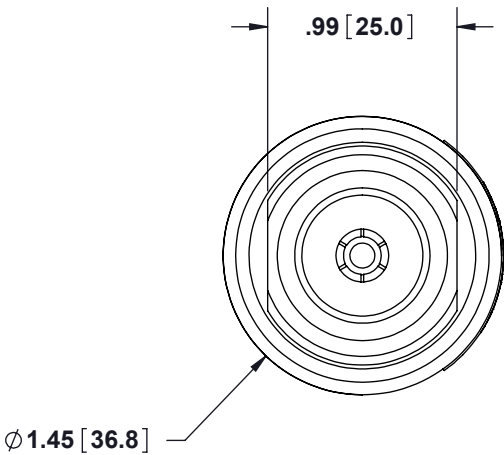


REVISIONS				
REV.	DESCRIPTION	ECN	DATE	APPROVED
C	REFER TO ECN	10413	4/26/12	CAP



MAXIMUM CHARACTERISTICS

APPLICATION:
DC SHORT/RF ONLY (NO POWER SUPPLY PROVISIONS)
BULKHEAD MOUNT BI-DIRECTIONAL
WEATHERPROOF WHEN INSTALLED

FREQUENCY RANGE:
698MHz TO 2.7GHz @ -26dB RETURN LOSS

MAX SURGE:
IEC 61000-4-5 8/20µs WAVEFORM
40kA MAX
20kA MULTIPLE

INSERTION LOSS:
≤0.1dB

CONTINUOUS POWER:
500W @ 920MHz
(750W @ 50°C)

MAX PEAK INSTANTANEOUS POWER (PIP):
27kW

LET THROUGH VOLTAGE:
≤±200mV FOR 3kA @ 8/20µs WAVEFORM

THROUGHPUT ENERGY:
≤5nJ FOR 3kA @ 8/20µs WAVEFORM

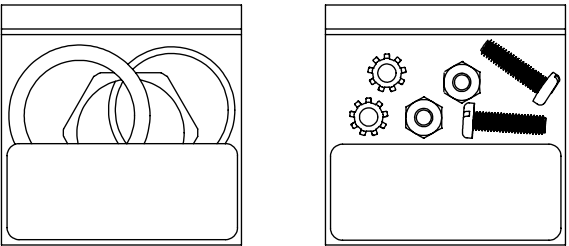
PIM 3rd ORDER:
<-155dBc (-112dBm); 2 X 20W INPUT

TEMPERATURE:
-50°C TO +85°C STORAGE/OPERATING

VIBRATION:
1G @ 5Hz TO 100Hz

MATERIAL:
BODY: TRI-M3™ PLATING OVER BRASS
PTFE: DIELECTRIC
CENTER PINS: Ag PLATED

ENVIRONMENTAL:
MEETS IEC 60529 IP67
MEETS BELLCORE #TA-NWT-000487
PROCEDURE 4.11, WIND DRIVEN (120MPH)
RAIN INTRUSION TEST



HARDWARE KITS INCLUDED
SCALE 1:2

CUSTOMER APPROVAL: _____ DATE: _____

ALL DIMENSIONS SHOWN ARE FOR REFERENCE ONLY.

UNLESS OTHERWISE SPECIFIED LEADING DIMENSIONS ARE INCHES DIMENSIONS IN [] ARE MILLIMETERS TOLERANCES: FRACTIONS=± 1/32 .XX=± .01 ANGLES=± 1 ° .XXX=± .005		DRAWN HMB	DATE 4/27/10	<div>PolyPhaser®</div> <div>TITLE DC SHORT 698MHZ-2.7GHZ DIN FEMALE SURGE FILTER W/MOUNT BRKT</div> <div>CUSTOMER SPECIFICATION</div>		
		ENG APPD CAP	4/29/10			
		PRODUCT MGR CAP	4/29/10			
		MARKETING APPD LJ	5/6/10			
MATERIAL NA		PROJECT NO. DD55663		SIZE B	CAGE 61114	DOCUMENT NAME TSX-DFM-BF-C
THIRD-ANGLE PROJECTION 		NOTICE: THE INFORMATION AND DESIGN IN THIS DOCUMENT IS THE PROPERTY OF TRANSECTOR SYSTEMS. ALL RIGHTS RESERVED.		SCALE 1:1	PROD CAT RFP	PART NUMBER TSX-DFM-BF
				SHEET 1	OF 1	REV C

THESE COMMODITIES, TECHNOLOGY OR
SOFTWARE WERE EXPORTED FROM THE
UNITED STATES IN ACCORDANCE WITH THE
EXPORT ADMINISTRATION REGULATIONS.
DIVERSION CONTRARY TO U.S. LAW PROHIBITED.