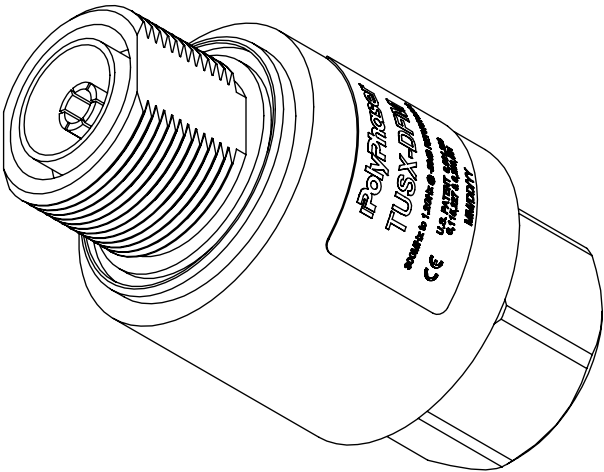
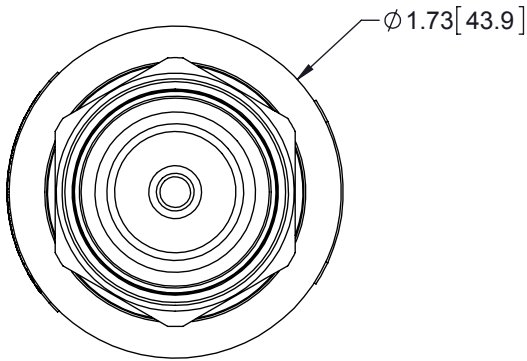
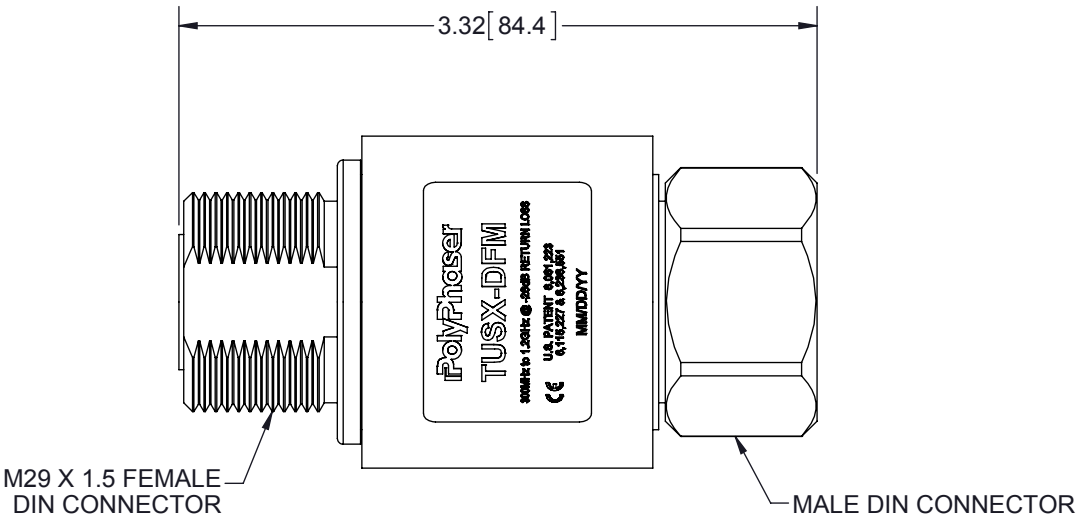
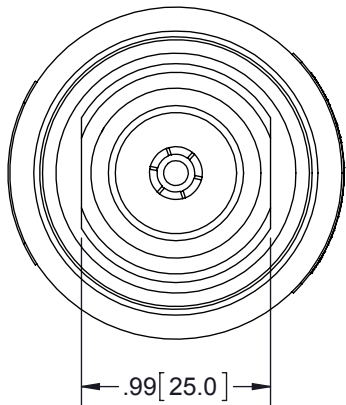


REVISIONS				
REV.	DESCRIPTION	ECN	DATE	APPROVED
E	REFER TO ECN	11859	7/19/13	MTH


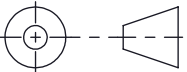


MAXIMUM CHARACTERISTICS

APPLICATION:  
DC SHORT/RF ONLY (NO POWER SUPPLY PROVISIONS)  
BULKHEAD MOUNT BI-DIRECTIONAL  
WEATHERPROOF WHEN INSTALLED  
FREQUENCY RANGE:  
300MHz TO 1.2GHz @ -26dB RETURN LOSS  
MAX SURGE:  
IEC 61000-4-5 8/20µs WAVEFORM  
30ka MULTIPLE STRIKES  
40ka ONE TIME  
INSERTION LOSS:  
≤0.1dB  
CONTINUOUS POWER:  
1kW @ 920MHz  
2.5kW @ 400MHz  
LET THROUGH VOLTAGE:  
≤±200mV FOR 3kA @ 8/20µs WAVEFORM  
THROUGHPUT ENERGY:  
≤5nJ FOR 3kA @ 8/20µs WAVEFORM  
PIM 3rd ORDER:  
<-155dBc (-112dBm); 2 X 20W INPUT  
TEMPERATURE:  
-50°C TO +85°C STORAGE/OPERATING  
VIBRATION:  
1G @ 5Hz TO 100Hz  
MATERIAL:  
BODY: TRI-M3™ PLATING OVER BRASS  
PTFE: DIELECTRIC  
CENTER PINS: Ag PLATED  
ENVIRONMENTAL:  
MEETS IEC 60529 IP67  
MEETS BELLCORE #TA-NWT-000487  
PROCEDURE 4.11, 120MPH WIND DRIVEN  
RAIN INTRUSION TEST  
CE COMPLIANT

CUSTOMER APPROVAL: \_\_\_\_\_ DATE: \_\_\_\_\_

ALL DIMENSIONS SHOWN ARE FOR REFERENCE ONLY.

UNLESS OTHERWISE SPECIFIED LEADING DIMENSIONS ARE INCHES DIMENSIONS IN [ ] ARE MILLIMETERS		DRAWN <b>R. DUNNING</b>	DATE 7/16/10			
		ENG APPD <b>JJ</b>	7/20/10			
		PRODUCT MGR <b>JJ</b>	7/20/10			
		MARKETING APPD <b>LJ</b>	7/22/10			
TOLERANCES: FRACTIONS=± 1/32 .XX=± .01 ANGLES=± 1 ° .XXX=± .005		PROJECT NO.		TITLE <b>300MHz TO 1.2GHz UHF SX BI-DIR FEM/MALE</b>		
MATERIAL NOTED		NOTICE: THE INFORMATION AND DESIGN IN THIS DOCUMENT IS THE PROPERTY OF POLYPHASER CORPORATION. ALL RIGHTS RESERVED.		CUSTOMER SPECIFICATION		
THIRD-ANGLE PROJECTION 		SIZE <b>B</b>	CAGE <b>61114</b>	PART NUMBER <b>TUSX-DFM</b>		REV <b>E</b>
		SCALE <b>1:1</b>	DOCUMENT NAME <b>TUSX-DFM-C</b>		SHEET <b>1</b> OF <b>1</b>	

THESE COMMODITIES, TECHNOLOGY OR  
SOFTWARE WERE EXPORTED FROM THE  
UNITED STATES IN ACCORDANCE WITH THE  
EXPORT ADMINISTRATION REGULATIONS.  
DIVERSION CONTRARY TO U.S. LAW PROHIBITED.