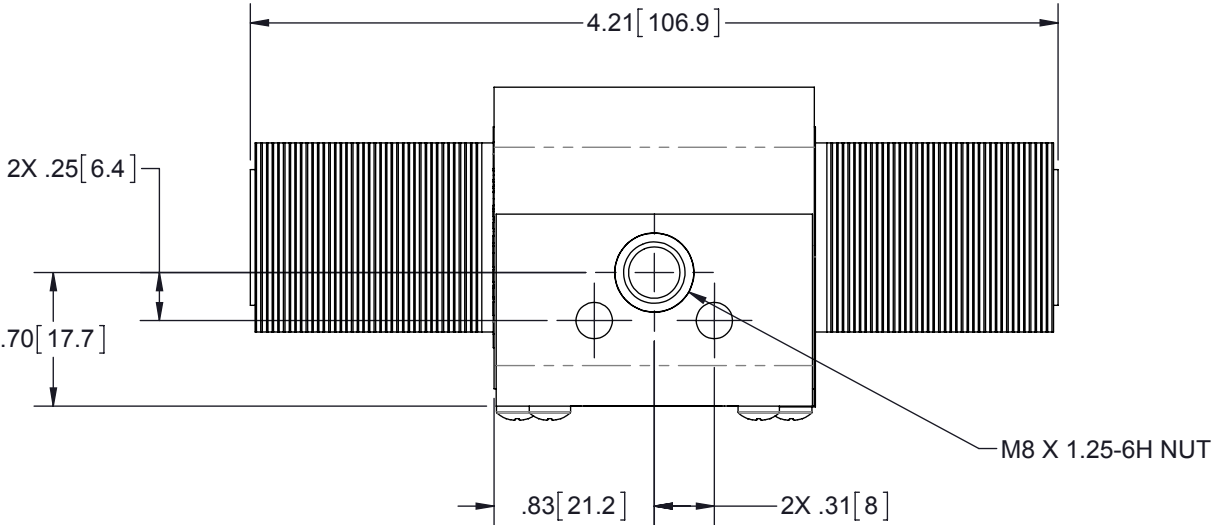
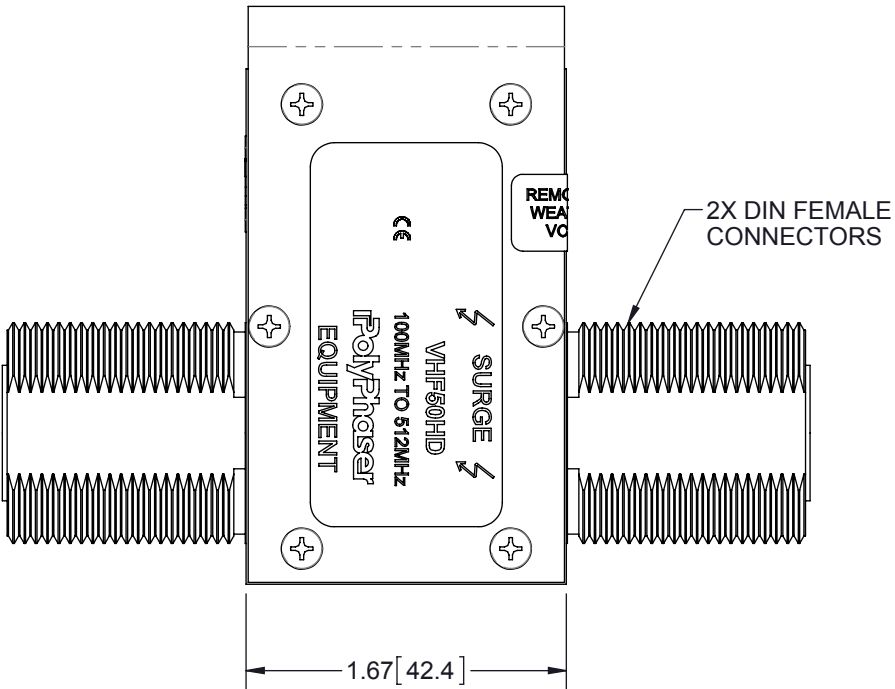
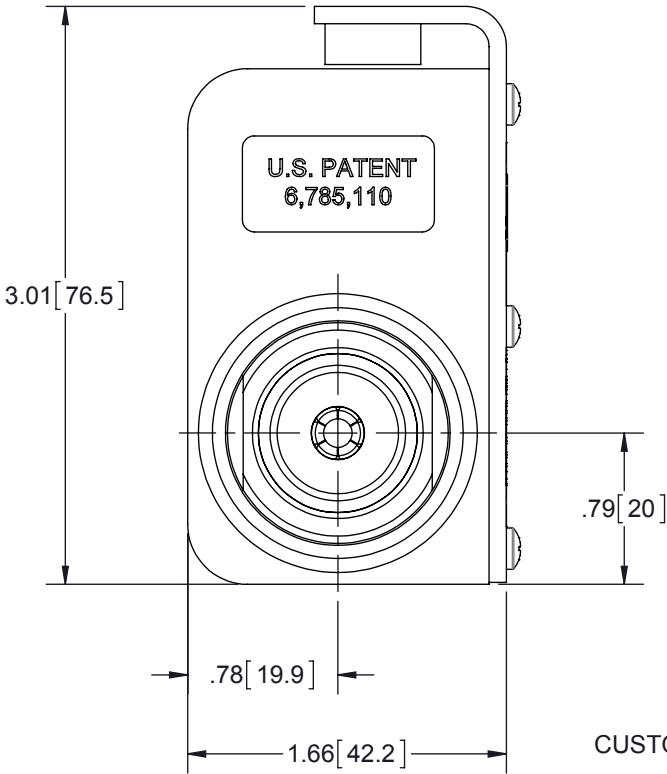


REVISIONS				
REV.	DESCRIPTION	ECN	DATE	APPROVED
F	REFER TO ECN	12041	9/24/13	KCB



HARDWARE KIT INCLUDES:

QTY	DESCRIPTION
1	WASHER 1.15ID FLAT SST TYPE 304
1	NUT M29 X 1.5 SST DIN
1	O-RING 027 SILICONE
1	SCREW CAP M8X1.25X10MM
1	WASHER 5/16 EXT 18-8 SS



MAXIMUM CHARACTERISTICS

**APPLICATION:**  
WEATHERIZED, FLANGE OR BULKHEAD MOUNT

**FREQUENCY RANGE:**  
100MHz TO 512MHz

**VSWR:**  
≤1.1:1 OVER FREQUENCY RANGE

**INSERTION LOSS:**  
≤0.1dB OVER FREQUENCY RANGE

**POWER:**  
750W RMS AVERAGE

**MAX. SURGE:**  
20kA IEC 61000-4-5 8/20μs WAVEFORM

**THROUGHPUT ENERGY:**  
≤500nJ FOR 3kA, 8/20μs WAVEFORM

**RELATIVE HUMIDITY:**  
TO 95%

**ENVIRONMENTAL:**  
MEETS IEC 60529 IPC67  
MEETS BELLCORE #TA-NWT-000487  
PROCEDURE 4.11, WIND DRIVEN (120MPH)  
RAIN INTRUSION TEST.


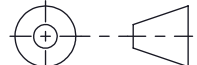
**TEMPERATURE:**  
-50°C TO +85°C STORAGE/OPERATING

**CE COMPLIANT**  
**RoHS COMPLIANT**

CUSTOMER APPROVAL: \_\_\_\_\_ DATE: \_\_\_\_\_

ALL DIMENSIONS SHOWN ARE FOR REFERENCE ONLY.

THESE COMMODITIES, TECHNOLOGY OR SOFTWARE WERE EXPORTED FROM THE UNITED STATES IN ACCORDANCE WITH THE EXPORT ADMINISTRATION REGULATIONS. DIVERSION CONTRARY TO U.S. LAW PROHIBITED.

UNLESS OTHERWISE SPECIFIED LEADING DIMENSIONS ARE INCHES DIMENSIONS IN [ ] ARE MILLIMETERS		DRAWN SH	DATE 6/25/03			
		ENG APPD RCD	6/27/03			
TOLERANCES: FRACTIONS=± 1/32 .XX=± .03 ANGLES=± 1 ° .XXX=± .010		PRODUCT MGR NT	6/26/03	TITLE 100-512MHz VHF COMB 750W FEM DIN PRESSFIT		
		MARKETING APPD SJD	6/27/03			
MATERIAL		PROJECT NO.		CUSTOMER SPECIFICATION		
		THIRD-ANGLE PROJECTION 		SIZE B	CAGE 61114	REV F
NOTICE: THE INFORMATION AND DESIGN IN THIS DOCUMENT IS THE PROPERTY OF TRANSECTOR SYSTEMS. ALL RIGHTS RESERVED.		SCALE 1:1		PART NUMBER VHF50HD	SHEET 1 OF 1	
		PROD CAT RFP		DOCUMENT NAME VHF50HD-C		