

HARDWARE KIT INCLUDES:

QTY	DESCRIPTION
1	WASHER 1.15ID FLAT SST TYPE 304
1	NUT M29 X 1.5 SST DIN
1	O-RING 027 SILICONE
1	SCREW CAP M8X1.25X10MM
1	WASHER 5/16 EXT 18-8 SS

MAXIMUM CHARACTERISTICS

APPLICATION:
WEATHERIZED, FLANGE OR BULKHEAD MOUNT

FREQUENCY RANGE:
100MHz TO 512MHz

VSWR:
≤1.1:1 OVER FREQUENCY RANGE

INSERTION LOSS:
≤0.1dB OVER FREQUENCY RANGE

POWER:
750W RMS AVERAGE

MAX. SURGE:
20kA IEC 61000-4-5 8/20μs WAVEFORM

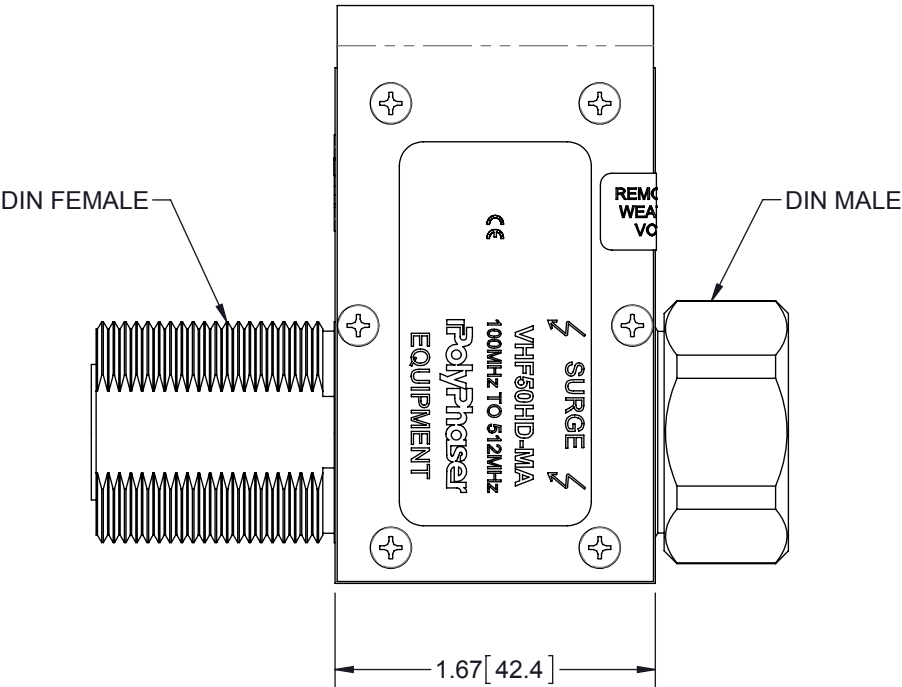
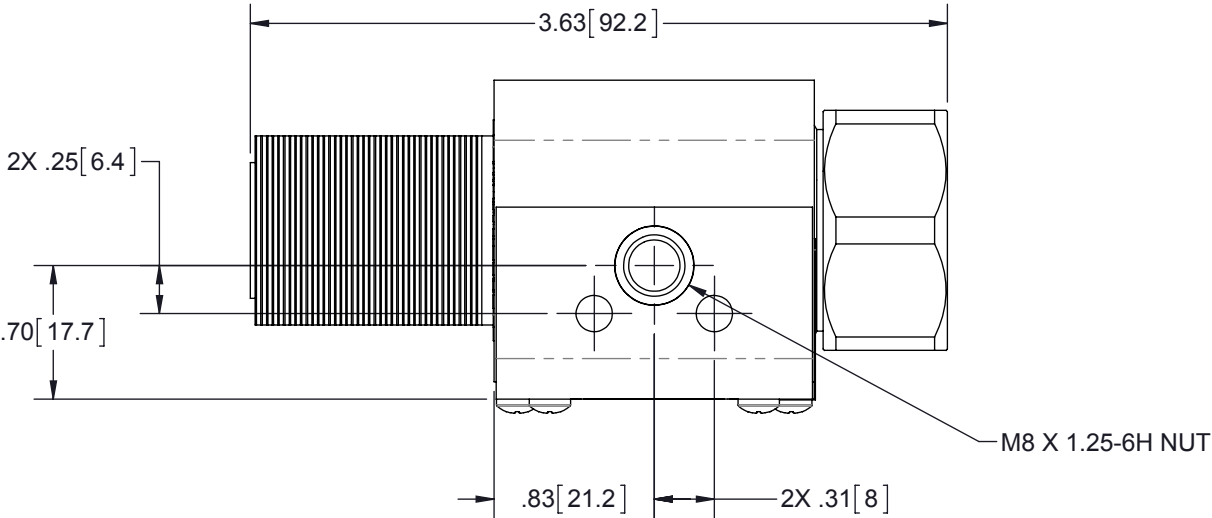
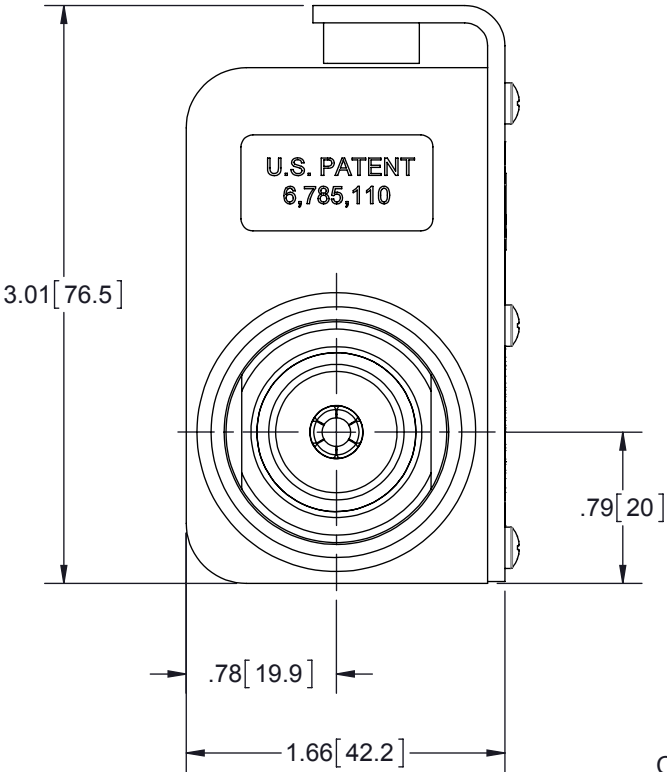
THROUGHPUT ENERGY:
≤500nJ FOR 3kA, 8/20μs WAVEFORM

RELATIVE HUMIDITY:
TO 95%

ENVIRONMENTAL:
MEETS IEC 60529 IP67
MEETS BELLCORE #TA-NWT-000487
PROCEDURE 4.11, WIND DRIVEN (120MPH)
RAIN INTRUSION TEST.

TEMPERATURE:
-50°C TO +85°C STORAGE/OPERATING

CE COMPLIANT
RoHS COMPLIANT



CUSTOMER APPROVAL: _____ DATE: _____

ALL DIMENSIONS SHOWN ARE FOR REFERENCE ONLY.

THESE COMMODITIES, TECHNOLOGY OR SOFTWARE WERE EXPORTED FROM THE UNITED STATES IN ACCORDANCE WITH THE EXPORT ADMINISTRATION REGULATIONS. DIVERSION CONTRARY TO U.S. LAW PROHIBITED.

UNLESS OTHERWISE SPECIFIED LEADING DIMENSIONS ARE INCHES DIMENSIONS IN [] ARE MILLIMETERS		DRAWN SH	DATE 6/20/03	<div>PolyPhaser</div>			
		ENG APPD RCD	6/27/03				
TOLERANCES: FRACTIONS=± 1/32 .XX=± .03 ANGLES=± 1 ° .XXX=± .010		PRODUCT MGR NT	6/26/03	TITLE 100-512MHz COMB 750W FEM DIN MALE DIN PRESSFIT			
		MARKETING APPD SJD	6/27/03				
MATERIAL		PROJECT NO.		CUSTOMER SPECIFICATION			
		THIRD-ANGLE PROJECTION		SIZE B	CAGE 61114	PART NUMBER VHF50HD-MA	REV F
		NOTICE: THE INFORMATION AND DESIGN IN THIS DOCUMENT IS THE PROPERTY OF TRANSECTOR SYSTEMS. ALL RIGHTS RESERVED.		SCALE 1:1	PROD CAT RFP	DOCUMENT NAME VHF50HD-MA-C	SHEET 1 OF 1